



P R O F I L E

*“Truth is by nature self-evident.
As soon as you remove the cobwebs of ignorance that surround it,
it shines clear.”*



CONTENTS

About Archimedes Group	01
Our Strengths	02
Our Goals	02
Scope of Consultancy	03
Our Network	03

Completed Projects - National

Akshaya Apollo Hospitals, Ahmedabad, Gujarat	04
Sahara Apollo Hospitals, Lucknow, Uttar Pradesh	05
Jehangir Hospital & Medical Centre, Pune, Maharashtra	06
Satguru Pratap Singh Apollo Hospital, Ludhiana, Punjab	08
Pushpanjali Crosslay Hospital, Vaishali, Ghaziabad, Uttar Pradesh	09
Sarvodaya Super-speciality Hospital and Research Institute, Faridabad, Haryana	10
101 Bed Ortho-Trauma Hospital for Dr. Bharat Mody, Baroda, Gujarat	11
The Cradle, GK-II, New Delhi	12
R.N.Modi Multispeciality Hospital, Kota, Rajasthan	13
Mahatma Gandhi Cancer Hospital & Research Institute, Visakhapatnam, Andhra Pradesh	14
Centre for Sight, New Delhi	15
Synapse Neurocare Pvt. Ltd., Mangalore, Mangalore, Karnataka	16
Sakra World Hospital, Bangalore, Karnataka	17

Gurudevan Institute of Medical Sciences, Perumbavoor, Cochin, Kerala	18
Sardar Vallabhbhai Patel Institute of Medical Sciences and Research, Ahmedabad	20
KD Hospital, Ahmedabad,	25
Believers Church Medical College Hospital, Thiruvalla, Kerala	27
Believers Church Medical Mall, Thiruvalla, Kerala	30
SVGH Trust Hospital, Chikmagalur, Karnataka	32
Trivandrum International Medical College, Trivandrum, Kerala	34
Government Medical College, Kozhikode, Kerala	36

International Projects

Apollo Hospitals, Colombo, Sri Lanka	38
Apollo Hospitals, Dhaka, Bangladesh	40
Jigme Dorji Wangchuk National Referral Hospital, Thimpu, Bhutan	42
Regional Referral Hospital, Mongar, Bhutan	44
Neurotrauma Unit for National Hospital, Colombo, Sri Lanka	46
200 Bed Al-kafeel Specialised Hospital-Holy Attaba Abbasiah, Karbala, Iraq	48
230 Bed Al-kafeel Specialised Hospital-Holy Attaba Abbasiah, Babylon, Iraq	50
Aioport City Hospital, Accra, Ghana	52
District General Hospital, Matara, Sri Lanka	54
Teaching Hospital, Peradenia, Sri Lanka	56
Kethumathi Maternity Hospital, Sri Lanka	58
600 Bedded Cardiology Institute for National Hospital, Sri Lanka	60
1200 Bedded Surgical Block for National Hospital, Sri Lanka	62
Paediatric Oncology Hospital, Najaf, Iraq	64
Zain Alabideen Medical Complex, Karbala	66

ARCHIMEDES GROUP



Mr. CHERUKURI SASIDHAR
MANAGING DIRECTOR

Archimedes Group was formed by Mr.Cherukuri Sasidhar along with his core team to provide exclusively Architectural Consultancy Services in Healthcare sector.

Mr.Cherukuri Sasidhar was heading the firm Archimedes India Consultants Private Limited (AICPL), formed in the year 1995. AICPL was formally re-constituted as an independent organization, out of the architectural projects division of Apollo Hospitals Enterprise Limited (AHEL). Since its inception, it was functioning as one of the sub-divisions of AHEL, and had been providing comprehensive Consultancy Services focused on Healthcare facilities Planning and Design to the Apollo Hospitals Group, as well as to various other top-of-the-line National and International clients.

Archimedes India Associates was formed in July 2014 as per the directive of Council of Architect since under the provisions of the Architect Act, 1972 Private Limited companies are not permitted to carry out the profession of Architecture in India and only individual or association of individuals having the qualification and registration with the Council of Architecture only can carry on with the profession of Architecture.

Today, **Archimedes Group consisting of Archimedes India Consultants Pvt Ltd, Archimedes India Associates and Archimedes Enterprises Pvt. Ltd** is one of the very few consultancy firms in the country specializing exclusively in Healthcare Architecture. With a highly competent, multi-disciplinary team of professionals comprising Architects, Engineers, Doctors and Hospital Management & Administration experts, the firm provides high quality comprehensive Healthcare planning and Design services for various Healthcare facility types.

Archimedes has made a foray into Turnkey Projects for Healthcare buildings. This includes services from design concept development, architectural detailing of the design, preparation of good for construction drawings, setting up team of construction management at site, medical equipment planning, arranging men, materials and project processes so as to enable a smooth workflow up to the commissioning of the project.

Each project we undertake is a collaborative effort of a team of highly dedicated, skilled and experienced professionals from various streams, **Medical Architecture & Engineering, Landscape Architecture, Project Planning & Management, Medicine, Healthcare Operations & Management, Finance and Medical technology**. Our team's long and diverse experience in Strategic Planning and Design of a wide spectrum of Healthcare facilities, our ability to adopt a Holistic approach to any planning and design exercise, our skilled multi-disciplinary team, our willingness to be innovative and adopt nonconventional approaches to planning and design, our ability to work together with our clients to help them achieve their strategic goals and objectives based on ground realities — these we consider as our principal strengths.

The firm's knowledge base is continuously broadened through professional association and collaboration with internationally recognized experts in the field of Healthcare and Architecture and interaction with its clients. Team members keep themselves abreast of the latest developments in Healthcare facilities design and Medical technology through direct interaction with experts in the USA, Australia, United Kingdom, Africa, Hong Kong and the Middle East.

Archimedes Group have their offices strategically located in the cities of Bangalore, Ahmedabad, Delhi and Kochi.

Our Strengths



Each project we undertake is a collaborative effort of a team of highly dedicated, skilled and experienced professionals from various streams, Medical Architecture & Engineering, Landscape Architecture, Project Planning & Management, Medicine, Healthcare Operations & Management, Finance and Medical technology.

Our team's long and diverse experience in Strategic Planning and Design of a wide spectrum of Healthcare facilities, our ability to adopt a Holistic approach to any planning and design exercise, our skilled multi-disciplinary team, our willingness to be innovative and adopt non-conventional approaches to planning and design, our ability to work together with our clients to help them achieve their strategic goals and objectives based on ground realities — these we consider as our principal strengths.

Our Goals



Each one of us at Archimedes Group has a deep sense of responsibility towards our clients and the community we design for. It is this sense of responsibility and commitment that urges us to continue to acquire new knowledge, sharpen our professional skills and continue to provide high value consultancy service to our clients to help them realize their individual and collective goals.

Creating well-designed environments for healing environments that are friendly and comfortable for patients; environments that support efficient delivery of Healthcare services; environments that are robust and energy efficient; improving upon and learning from each experience in order to serve our clients' needs better — these will continue to be our goals... goals that are not static but continue to expand and challenge us to excel over our own achievements.

Scope of Consultancy

Our in-house team of Healthcare Planners, Architects, Engineers, Interior Designers and Healthcare professionals, in collaboration with a select panel of well-qualified Specialists Consultants, provide the following services

A	Development of Business Plan and Feasibility Report
B	Architecture Consultancy Services
1	Medical Space Programming
2	Architecture and Structure Engineering Services
3	MEPF (Mechanical, Electrical, Plumbing and Fire Fighting)
4	HVAC (Heating Ventilation and Air Conditioning) and IBMS (Integrated Building Management System)
5	Electrical and ELV Design
6	MGPS (Medical Gas Pipeline System)
7	Kitchen, CSSD & Laundry Services
8	Interiors – Furniture Design, Lighting, Way Finding and Signage Design
9	External Development and Landscape Architecture
C	Construction Management Consultancy Services
D	Medical Equipment Planning
E	Operation Management Services

Our Network

Archimedes Group has its principal design office at Ahmedabad. In order to facilitate easier and speedier client servicing, we are offices in the following cities :



Akshaya Apollo Hospital, Ahmedabad, Gujarat

SITE PLAN



As part of its strategic plans to expand its multi-speciality hospital network in the country, especially in the north- western region, the Apollo Hospitals Group initiated the establishment of a **multi-speciality tertiary care hospital** in Ahmedabad sometime in the mid-nineties. **Project implementation commenced in 1998** based on designs drawn up by Stone Marracini Patterson (SMP) Architects, a healthcare design consultancy firm based in San Francisco, USA. Fresh architectural designs were drawn up by Apollo's in-house design team, strictly adhering to Vaastu principles. Construction resumed based on the new design. Larsen & Toubro, the principal contractors of the project, completed the construction in April, 2003. The hospital was formally **inaugurated on 11th May, 2003**.

With a total **built-up area of 300,000.00 sqft** on a site measuring 10.00 acres, Apollo Hospitals, Ahmedabad, is the **first quarternary-care hospital** in Gujarat, providing research facilities in addition to tertiary-care medical facilities. Designed to accommodate **400 in-patient beds**, the hospital provides healthcare services in 52 medical specialties including **Cardiology, Cardio- thoracic Surgery, Neurology, Nephrology, Oncology, Hepatology, Orthopaedics, Physiotherapy, etc.** It is equipped with latest generation **MRI, CT-Scanner with Laser Camera & Auto-Processor, Gamma Camera, Linear Accelerator, Chemotherapy Unit, Dialysis Unit, Cardiac Cath-lab, 7(seven) Operation Theaters** supported by 75 critical care beds, **Blood Bank, Emergency & Trauma center, well-equipped Birthing Center, Telemedicine Center, 24-hour pharmacy, a helipad** to enable air-ambulance service, besides numerous other medical facilities.



Sahara Hospital, Lucknow, Uttarpradesh

SITE PLAN



Labelled as the first '**7-star hospital**' in the country, this **fully air-conditioned 350-bed multi-speciality tertiary-care hospital** building with a total built-up area of 800,000.00 sqft, and rising upto 15 floors. The building was constructed on a 31.00 acre plot of land on the outskirts of Lucknow city.

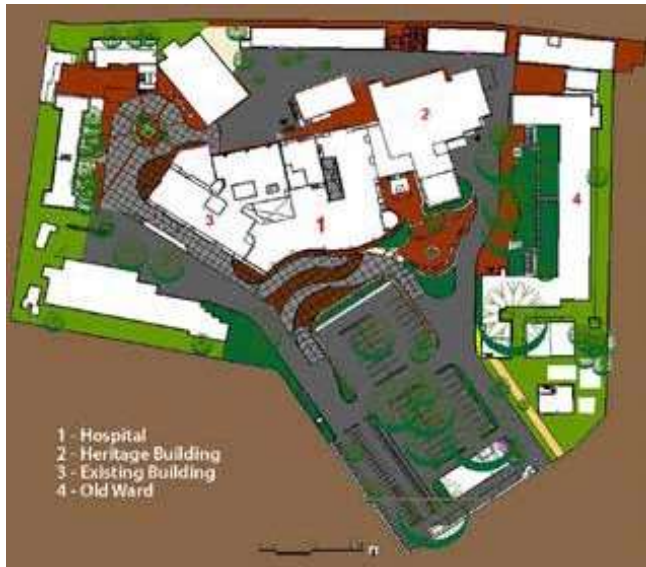
Archi Medes (I) Consultants Pvt. Ltd., provided hospital interior architecture & planning as well as engineering services inputs. Larsen & Toubro are the principal contractors.

Over 50 medical specialties is provided in the hospital. These specialties is supported by the latest-generation **medical equipment, 90 ICU beds, 14 ultra-modern OT's, 2 Cath-Labs and 10 Dialysis beds**, besides other facilities.



Jehangir Hospital & Medical Centre, Pune, Maharashtra

SITE PLAN



The history of Jehangir Hospital & Medical Center dates back to the years when World War-II was coming to an end. It was around this time that Dr. Edulji H. Coyaji conceived the idea for a hospital. On a **6.0 acre piece of land donated by Sir Cowasji Jehangir** and Lady Hirabai Jehangir at Sassoon Road, Poona, a small hospital was set up. The hospital was named **Jehangir Nursing Home**, in memory of Sir Cowasji Jehangir's son, Jehangir, who died in an accident in 1944. A Trust was formed to manage and operate the facility. Over the years the hospital expanded rapidly. But the growth was rather organic and without a structured development strategy.

In 1998, the Trust invited the Apollo Hospitals Group and its hospital design team to advise them on future growth and development strategies for the hospital campus. As an outcome of this exercise, the design team came up with a **Master Plan proposal for the integrated development of the entire hospital campus. Rationalization of land utilization, bringing about a higher sense of order and structure within the campus, rationalization of functional adjacencies and creating greater imaginability for the campus were the principal objectives of the exercise.**

Besides providing more parking space, a **modern 5-storeyed block was added as a contiguous extension of the existing 5-storeyed hospital building.** With a total built-up area of **66,000.00 sqft**, the new block was designed to house a **Mother & Child Unit, an 8-bed Dialysis Unit, 6 (six) state-of-the-art Operating Theaters supported by surgical & medical ICUs, in-patient deluxe rooms, OPD rooms, a Physiotherapy Unit, CT-scanner** and an upgraded Emergency Department.

Today, under the professional management of Apollo Hospitals Enterprise Ltd., the hospital is fully operational as a high end **250-bed multi-speciality tertiary-care hospital**, providing high quality Healthcare services not only to the citizens of Pune but also to the entire region of this part of the country.





Satguru Pratap Singh Apollo Hospital, Ludhiana, Punjab

SITE PLAN



Constructed on a **4.35 acre plot** of land donated by the Namdharis, this **245,000.00 sqft, 300-bed, 9-floor-high** imposing hospital building is the realization of Satguru Partap Singh's dream of setting up a hospital to serve the Healthcare needs of not only the devotees of the Namdhari community, which he founded, but also the common people of Ludhiana and the region of Punjab and the neighbouring states. Promoted by SJS Holdings Limited, the hospital is operated and managed by Apollo Hospitals Enterprise Limited. Complete architectural and engineering services support was provided by Apollo's in-house Projects Division.

Located at Sherpur Chowk on the National Highway, right at the entry point to the city of Ludhiana, this **Multi-Specialty tertiary-care hospital** provides world class healthcare services in all the core disciplines including **Cardiology & Cardio-thoracic Surgery, Neurology & Neuro-Surgery, Nephrology, Urology, Orthopedics, Physiotherapy, a 10-bed Dialysis Unit, Gastroenterology, Obstetrics & Gynecology, Ophthalmology, ENT, Dentistry, General Medicine & General Surgery, 7(seven) hi-tech Operation Theaters** supported by 48 well-equipped Critical Care beds and ER & Trauma Unit.

The foundation stone for the building was laid on 28th October, 2000, and 54 months later, the hospital opened to the public in April, 2005.



Pushpanjali Crosslay Hospital, Vaishali, Ghaziabad, Uttar Pradesh

SITE PLAN



A **400 bed Multispeciality Hospital** was setup at Ghaziabad, Uttar Pradesh by Crosslay Remedies Pvt. Ltd. which was incorporated in 2002 and subsequently acquired by Pushpanjali group of Companies in 2005. Puspanjali Group of Companies has been in existence for 15 years and has considerable experience in providing Healthcare services in Delhi. With a **site area of 13879.05 sqm and a total built up area of 40,300 sqm.** Site is located on National Highway no. 24 and within 5 km from railway station and 35 Km from the Indira Gandhi International Airport.



Designed to have the latest state-of -the-art medical equipments and an internal and external ambience expressing efficiency, cleanliness, comfortable to sooth the strained nerves of the patients, relatives and the staff this hospital is the first of its kinds in the region to provide quality Healthcare at an affordable cost.



Sarvodaya Super-speciality Hospital & Research Centre, Faridabad, Haryana

SITE PLAN



A **150 bed multispeciality hospital** is set up by Dr Rakesh Gupta. He along with Mrs. Gupta own and manage an existing 150 bed hospital at Faridabad which they had constructed gradually over the years.

The new Hospital has **6 operating rooms, 1 Cathlab, 40 Intensive care beds**. There is also a **nursing college within the site** connected to the hospital building on all floors. The hospital has a **building area of 1,70,400 sft** and nursing college area including **accommodation for nurses of approximate 70,000 sft** all within a **site area of 16139.04 sqm**.

There is a welcoming front entrance portico which extends to a **front atrium which will provide shelter for the visitors** as during the visiting hours there is always a sudden surge of crowd.



101 Bed Ortho-Trauma Hospital for Dr. Bharat Mody, Baroda, Gujarat

SITE PLAN



Proposed **101 Bed Ortho-Trauma Hospital** in a site area of **2.86 acres** owned by **Dr. Bharat Mody** conceptualized to develop a comprehensive master plan with phase wise development. The **first phase to target 101 beds** and the future phase will develop into **175 beds** with mixed land use facilitating a **Shopping mall and Hotel**.

The master plan was conceptualized with strict adherence to the principles of vaastu-shastra which was a major factor in the evolution of architectural design.

An analysis to develop an **energy efficient building** also resulted in the architecture of the building, to develop a **cost effective building technology** aiming to **economize on the operational cost of hospital systems**.



The hospital for **first phase** covered a total area of **1, 28,860 sq.ft** with **4 Operation theatres, 24 Intensive care Beds, 77 Intermediate Beds** to form part of **101 Beds**. Other facilities within the campus includes **residential quarter for nurses and resident doctors**. A **large double height atrium space** between the first phase and the future phase will have **translucent roof with podium structure** for **landscape gardens** connecting and providing a respite to the battered and bruised soul of the patients.



The Cradle, GK-II, New Delhi



With the sobriquet Boutique Birthing Center, The Cradle is AHEL's first ultra-modern **super-speciality birthing center** devoted entirely to the mother and her child. Promoted by Sunrise Medicare Limited, a joint venture of the Talwar Group and the Dabur Group, **The Cradle is designed to provide home-like comforts and convenience to the mother, the child** and their family members.

Set amidst sylvan surroundings, this birthing center is equipped with state-of-the-art birthing related medical facilities. **2 (two) Operation Theaters, 4 (four) Labour Delivery Recovery (LDR) rooms, a 4D Ultrasound Unit, 6-bed Level-III Neo-natal ICU, 4 (four) suites, 6 (six) Super Deluxe Rooms** and 16 (sixteen) Deluxe Rooms are some of the major facilities of the center. A **24-hour pharmacy, coffee shop, communication center, a gift shop and a children's play area** are some of the other support facilities.



Facility planning and engineering services support were provided by AHEL's design team. Project implementation was coordinated by Apollo Health & Lifestyle Ltd.

R.N.Modi Multi-speciality Hospital, Kota, Rajasthan

SITE PLAN



RN Modi Charitable Trust with Mr. R.N Modi at its helm has spearheaded setting up of many Engineering and Technical colleges which have been availed of by students from all over the country. The Hospital has been setup with Technical support from Apollo Group of Hospitals and is operated by this group.

The hospital has **170 beds within 1, 16, 175.5 sft area, constructed within a site area of 6120.1 sqm.** Equipped with **4 Operating rooms, 1 Cathlab and about 40 Intensive Care beds.** Providing **medical care at a tertiary care level** this hospital has been a boon to the local patients who otherwise have to travel to Delhi for availing of quality healthcare. An architectural expression of small "jharokhas" in a modern language instead of large glass windows, has been adopted, as is befitting the climate of the region. A **5 storeyed high atrium at the centre** of the building brings in natural light and provides for waiting space for patients and relatives.



Mahathma Gandhi Cancer Hospital & Research Institute, Visakhapatnam, Andhrapradesh

A proposed **50 bed** Cancer hospital with all modern diagnostics like **CTscan, MRI, Nuclear Medicine, OT complex, Intensive care beds, Therapy ward, two Linear Accelerators** this hospital provides comprehensive treatment for Cancer in that region.



Centre for Sight, New Delhi



Dr. Mahipal Sachdev, Chairman & Managing Director, **CFS**, needs no introduction. As a well-known consultant eye surgeon at Apollo Hospitals, New Delhi, and running a highly successful private practice. in South Delhi, Dr. Sachdev was one of the first eye surgeons in the country who pioneered the practice of LASIK Surgery.

Fuelled by the desire to provide international standard ophthalmologic services to his patients, Dr. Sachdev initiated the construction of a brand new eye care center at Safdarjung Enclave, New Delhi. Construction commenced in early 2003. The project was **commissioned in mid 2004**. With a total **built-up area of 9800.00 sqft**, with an investment of **INR 6 crores**, Center for Sight, today, is fully operational. In addition to the standard **LASIK** and other **ophthalmologic** facilities, the center is now equipped with a **Bausch & Lomb's Zyoptix z-100**. An optical sales counter and a pharmacy outlet have been integrated into the Center. Today, Center for Sight ranks among the top four eye care centers in India.



Synapse Neurocare Pvt Ltd, Mangalore, Karnataka

Synapse Neurocare Private Limited, Mangalore is a **105 bedded Brain and Spine Specialty hospital** constructed with **ground and 4 floors** above , with a total **built up area of 64,000 Sq.Ft**, having departments like Neurology/Neurosurgery etc.

This was commissioned by September 2015.



Sakra World Hospital, Bangalore, Karnataka

The Hospital is a **300 bedded Multi- Specialty** constructed in one phase, with phase wise operations with phase 1 accommodating and operating **120 beds with infrastructure made ready for 300 beds**. An additional 180 beds to be added in the Phase 2 with proper allocation of support services for the entire Hospital building in phase 1.

With the intention of providing world-class medical treatment, the proposed hospital is having world-class infrastructure & is equipped with the latest medical equipment. Utmost care has been taken to ensure that the surrounding environment is preserved by keeping pollution within the stipulated standards and using eco friendly techniques.



The **total Site area of the proposed Project is 11008 Sq mts.** ample parking space has been planned. Sewage treatment plant to keep the environment free from pollution & also rain water harvesting is taken care. Total power requirement is taken care by means of emergency & permanent power arrangements, where as emergency is taken care by alternate power system.



The following departments were provided in the hospital:

- Neuro & Spine surgery.
- Orthopedics.
- Cardiology.
- Emergency & Trauma.
- Plastic & Vascular Surgery.
- Radiology department housing X-ray, CT scan and MRI.
- Nephrology & Urology.

The departments are supported by requisite number of Operation Theatres, Intensive care beds and inpatient beds. Support services like clean utilities, sluice rooms stores, toilets, housekeeping etc are also provided.



Gurudevan Institute of Medical Sciences, Perumbavoor, Cochin



Sree Narayana Gurukulam Trust is a registered Charitable Society. The trust is dedicated to the principles of **Sree Narayana Guru** who gave top priority to education and technical training and with better quality education and treats equally all of its aspirants without regard to caste, creed and economic status.



To fulfill his mission, the Trust established in the year 2002 Sree Narayana Gurukulam College of Engineering state of the art infrastructure, dedicated highly qualified senior faculty, disciplined campus of a high reputation with an emphasis on the personal development of each and every individual. The trust with eminent personalities from diverse spheres have been working towards continuous pursuit of bringing Guru's vision of making quality education within the reach of all and opening avenues to the youth, far and near of world class higher education. The trust has been relentlessly and emphatically focusing on education and private enterprise for the ongoing upliftment of the quality of life. The trust with this mission is willing to establish "**Gurudevan Institute Of Medical Sciences**" within 21 acres of land at Aimury, Perumbavoor with a focus to start a Multispeciality Hospital with a vision to provide **a 150 Admission Medical College and 750 Bedded Teaching Hospital with other Para- Medical College and Nursing College.**

The Centre of Excellence "**Gurudevan Institute Of Medical Sciences**" would encompass of **150 bedded Multispeciality hospital** specializing in **Cardiology and Cardiac-thoracic surgery, Orthopedics, Neurology and Neuro-surgery, Oncology** with state of the art Internationally accredited healthcare service in Kerala.



The hospital is designed to have all advanced and modern **Radiology, Imaging (CT scan & MRI), Radiation Therapy Linear Accelerators), state of the art OT Complex, Intensive care units, Cathlab Complex, and inpatient beds** with elements of Kerala architecture to be embodied with a essence of its nature to create an "Healing environment".

The hospital is been designed with a provision to expand to 300 beds in a phased manner to cater the demands of the healthcare service required in the region and expand into a world class institute in the time to come.

The trust focus is to deliver International Class healthcare with a service focus, by creating an institution committed to the highest standards of medical and service excellence, patient care, scientific knowledge and medical education.



Sardar Vallabhbhai Institute of Medical Sciences and Research, Ahmedabad, Gujarat

Ahmedabad Municipal Corporation (AMC) has established Asia's largest 1500 Bed Multispecialty Hospital named **Sardar Vallabhbhai Patel Institute Of Medical Sciences and Research (SVP Hospital)** at Existing VS Hospital campus in Ellisbridge area of Ahmedabad, Gujarat. A site area from existing 27 Acres has been allocated for this hospital and the total built up area for proposed facility is 15,54,000 Sq. Ft. with 1500 Beds. Total cost of the project is 429 Crores. Site is located within existing Vadilal Sarabhai Hospital campus facing the Sabarmati River Front Development at back side and adjoining to existing NHL Medical College. To be managed by AMC, Multispecialty hospital will offer high quality healthcare services with **32 OTs, 139 ICUs, 1152 total Wards, 128 Paid Beds and 550 doctors' residences**. The Hospital buildings is a 18 storied high rise structure with helipad for air ambulance facility on top.

Archimedes was involved in providing Architecture Design Consultancy Services, Construction Management Consultancy Services, Transition Management Services /Operation Management Services





SARDAR VALLABHBHAI PATEL
INSTITUTE OF MEDICAL SCIENCE AND RESEARCH



Highlights of project:

- It has easy access to Emergency & Trauma department preferably on the ground floor with covered drop off leading into a 5- storey atrium.
- Out patient department is split into ground and first floor in close proximity with the diagnostic area.
- Operation Theatre and Intensive Care units are adjacent to each other, stacked above each other in the modules of 4 OT and Intensive Care units of 20 beds with mechanized movement of clean material and dirty material.
- General wards designed for a 30 bedded unit with the respective Operation Theatres and Intensive Care units.
- Provision of Special Rooms – semi deluxe rooms and single deluxe rooms in block A at top most 5 floors.
- Provision of residents doctor' accommodation in block B and block C at topmost 5 floors.
- Emergency & Trauma beds – 60 beds.
- High end diagnostic- 2 MRI (1 for future), 2CTscan (1 for future)
- Low end diagnostic – X- rays, USG, Mammography, TMT, Echo, ECG, EEG, EMG, Urodynamic labs, and PFT etc.
- Out patient department- All specialty spread at ground floor and first floor with laboratory and blood bank at upper floors.
- Operation Theatres- 32 nos, Cath-lab-2 nos. (4 Nos of ot at every floor for 8 floors) along with CSSD at the upper floor with mechanized transport of clean material and dirty material.
- General wards- 1276 nos. (30 Bedded wards with support facilities).
- Hospital administration and services at services building – WTP, HT panel, LT panel, AC plant room, kitchen, laundry, boilers, medical record room, engineering maintenance workshop.
- Parking facilities in 2 nos of basement for 250 cars, with a future provision of mechanical car parking facility for 500 cars.



ABOUT THE AWARD.....

In view to recognize and motivate the extra ordinary works in steel, steel buildings and metal buildings, Magazine laid the foundation for the same through "SSMB AWARDS" which was ordained on 2nd May 2018 in New Delhi. The purpose is to promote more of steel construction and bringing the dream of "Make in Steel" come true in the coming years.

CATEGORIES

The following are the categories which were appreciated:

- Best Stadium Design in Steel
- Best Transportation (Building) in Steel
- Best Industrial Building in Steel
- Best Innovative Steel Design
- Best Steel Building in Public Sector



Our Project Sardar Vallabhbhai Patel Institute of Medical Sciences and Research was selected the Winner for the Best Steel Building in Public Sector.



IGBC – GOLD RATING

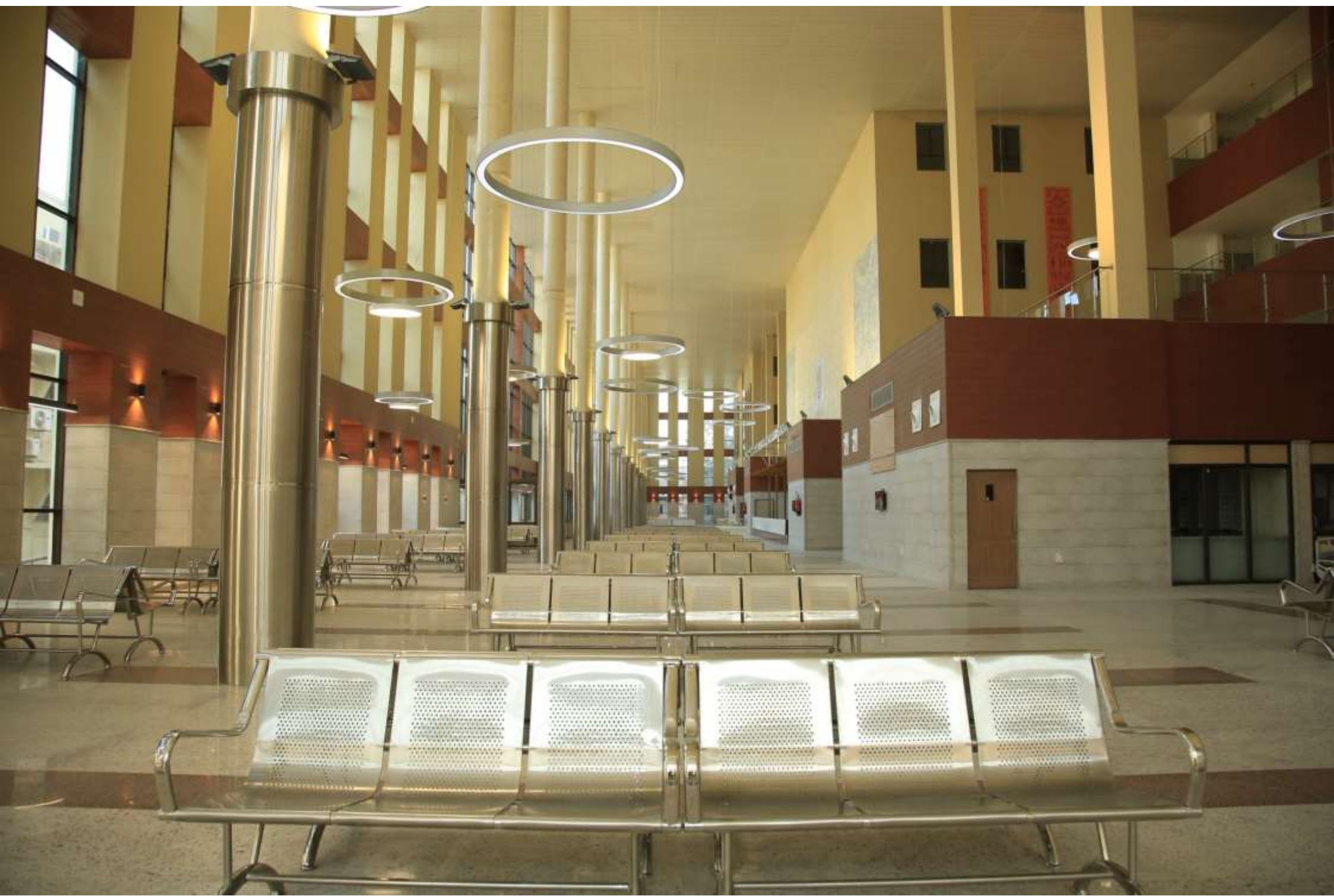


BEST STEEL STRUCTURE IN PUBLIC SECTOR

It was selected from five nominations which were also hospitals.

The Chief Guest for the event was Rajya Sabha MP, Pratap Singh Bajwa. The Award was accepted by Deputy Municipal Commissioner, Ahmedabad Municipal Corporation, Dr. Kuldeep Arya, the Principal Consultant – Archi Medes (India) Consultants Private Limited and the Structural Consultant – Ramboll India Private Limited. It was a proud moment for us to represent the Largest, Tallest, first LEED – Gold rated Public Teaching Hospital in India from Ahmedabad, Gujarat.





KD Hospital, Ahmedabad, Gujarat

Shree Harihar Maharaj Kamdhenu Gau Sevashram Trust has established 300 bedded Multispecialty Hospital at prime location at Vaishnodevi circle at Ahmedabad, Gujarat. The Concept design was based on preliminary information shared by client, followed by the space program which is developed as per the new regulations of Medical Council of India. Total Site area is about 2,50,000 sq. ft.



FEATURES

Service building as separate building for total area of 4,22,888 sq. ft as construction area. Basement parking facility for staff and dedicated separate parking facility for doctors and visitors as surface parking in site plan. It has centralized CSSD, LAUNDRY and Administration areas with IP Pharmacy store with state of an art facilities. Grand Entrance with Skylight and atrium with sufficient waiting area with OPD and low end Diagnostic facility, Master Health Check up and Emergency Department and related facility are located on Ground floor for ease of flow of patients. Entire first floor proposed with OPD and Master Health Check facility with provision of escalators is provided for easy access of flow of patients.

Two Endoscopy suites, Ophthalmology and IVF, Physiotherapy, Dialysis with view of Terrace Garden and Mother and Child care unites are provided immediately above OPD floors. Five modular state of an art operation theatres and additional three conventional Operation Theatres with Neuro, Surgical ICUs in addition to 10 bedded ICU with CTVS pre- op , Post- OP areas and CTVS POST OP are the critical areas provided considering sterile and non sterile corridors with international standard materials and finishes. Blood Bank, Laboratory and other admin areas are common facilities approached by staff without disturbance to patient/staff movements



Two Cath Labs with 10 bedded CCU, Pre and Post Angio 10 beds, and Two ICUS each 10 bedded are provided with excellent views of scenic beauty and landscapes around site. Top three floors are in- patient floors with 145 patients beds in various categories like general wards, twin sharing Single deluxe rooms and suite rooms. Two light wells are provided to get enough light into the common spaces. Total of nine elevators are provided with all being bed elevators. Service building is proposed with Central HVAC Plant, Central Kitchen, Cafeteria, Auditorium and Nurse quarters which has Compulsory HVAC systems for ICU, operation theatres and other critical facilities. Power backup of critical facilities and non-conventional energy use compulsory in case of non – critical facilities are also considered.



 **Kusum Dhirajlal Hospital**

Believers Church Medical College Hospital, Thiruvalla, Kerala

Believers Church Medical College Hospital is a multi-Specialty Hospital in Thiruvalla, Kerala, India. Believers Church Medical College Hospital is a healthcare project of Believers Church India. The BCH is involved in nation-building social and educational projects, healthcare initiatives, charitable activities, community development programs, rehabilitation projects and relief works.

Dr. K.P. Yohannan, Metropolitan of Believers Church is the patron of the hospital.

The work majorly consists, construction of Multi storied of Composite Structure **(15 Floors – 03 Phase) of area 18,80,000sq.ft**, RCC (Piling work) + Structural Steel of Hospital Building with finishes and provisions of all internal services for the said proposed project at Believers Church Medical College Hospital

“Propose Believers church multispecialty hospitals consists of **2107 beds of 15 floors cum terrace with helipad** for the Heli-ambulance service. Only few multispecialty hospitals in India have this facility. The building is planned to construct with combination of **Structural Steel and RCC**. This type of buildings will give high protection from fire, earthquake and many other natural hazards, further it is very much reliable, quicker by Reducing Construction time by 50 to 75% and also Safer being in existing hospital with less air & noise pollution during the construction of this additional Hospital space. The main facilities in the Proposed hospital are as follows, a very **big main lobby, Cancer treatment have been LINAC departments with PET CT, Hi-tech medical equipment, Cath lab, 26 no's of operation theaters, around 10000 patients capable of Outpatient department and diagnostic center.**



Believers Church Medical College Hospital, Thiruvalla, Kerala

Also for patients and visitors purpose we have planned 36 No's lifts, 06 escalators reserved for the utility work, fully centralized air condition system, automatic fire fighting system, well equipped kitchen & laundry service, plumbing and will be IGBC rated green building".

In brief, building foundation work consists of bored cast in situ piling work to carry entire load safely below the ground through Pile Cap also Grade Slab, thereafter as per design, Shear walls, planned Internal and external staircases with provision of Ramps, block/brick wall and other finishes as required with a provision of Helipad on top of building for air ambulance facility. The Main building contains RCC structure up to foundation level only or Ground Floor finish level. Thereafter Structural Steel work of column, beam and decking sheet. All steel columns will be encased with block at every floor level from Ground Floor itself and the connected Steel beams (MB and SB) are fire protected/coated with designed thickness fire protection paint as per the fire norms. Decking Sheet above the steel frame, floors with all necessary accessories as per drawing galvanized with the provision of shrinkage bars prior to concrete casted over decking sheet at each floor ensuring all connection and cut out provision.

All internal and external finishes have been designed as per Health care industry norms with appropriate utilization of space as per latest Medical practice/ norms requirement. All Services required for multispecialty Hospital have been also incorporated, which mainly consists of Electrical, Plumbing, Fire Fighting, HVAC, Medical Gas Line and other specialized services to give integrated look and sustainable building. External Infrastructures development consists of Landscape, Electrical services, Plumbing & Fire Fighting, Sewage Treatment plants, LT, HT & Transformer provision, DG set up and other ancillary services to support entire project.





Believers Church Medical Mall, Thiruvalla, Kerala

This shopping complex building along with multiplex, service apartments and hotel with a **built-up area of 64641.50 Sq.Mts (695542.54 Sq.Ft)** rising up to Eighteen floors with helipad. The building is being constructed on a three acre plot of land.



The layout integrates leisure and recreational facilities with commercial and residential components for a comprehensive and authentic destination for residential and visitors. Entertainment, Dining and Leisure are the nutrients that are enriching commercial complex.



Amenities include puzzle parking in ground floor retail shops at lower levels from First to Fourth Floor, Physiotherapy at Fifth Floor multiplex of 5 no's of each 150 capacity at Third Floor Level, patients relatives accommodation at Sixth and Seventh Floor, terrace garden at sixth floor service floor at eighth floor Service Apartments, Single Rooms at Ninth Floor Level, Single Bedroom and Double Bedroom units at Tenth to Fifteenth Floor and hotel & restaurant at Sixteenth to Eighteenth Floor Level.

Beautiful interior landscapes not only provide buffers, but also create pedestrian connections that help reduce traffic congestion. Common spaces to create more points of convergence and grandeur. It excels in four areas like extraordinary design, hyper levels of service, the internationalization of brands and decentralization of food and beverages.

The building is **planned to construct with combination of structural steel and R.C.C.** This type of buildings will give high protection from fire, earthquake and many other natural hazards, further it is very reliable, quicker by reducing construction time by 50% to 75%.the steel columns, beams and deck slab is fire protected, coated with designed thickness fire protection paint as per the fire norms.

All **internal and external finishes have been designed as per the latest technology** and locally available materials. All services like Electrical, Plumbing, Fire Fighting and HVAC are incorporated.



SVGH Trust Hospital, Chikmagalur, Karnataka

SITE PLAN



A **World Class Charitable Hospital** that delivers medical treatment for Heart, Joints, Brain, spinal cord, Kidney, Skin, Ear, Nose, throat, Lung and Cancer, working through a network of collaborations in its centers of excellence with the best Doctors to treat the economically backward sections.

The Hospital is developed in two phases.

Phase-I: 150 bedded Multi-speciality Hospital.

Phase-II: 1100 bedded Institutional Medical Hub in 28 acres of land offering teaching services from Medical, Dental, Nursing, Pharmacy and Paramedical. It also consists of Patient-care services for all specialities.





Specialties of a high standard and quality to be available for:

- Cardiology
- Cardio Thoracic Surgery
- Internal Medicine
- Pulmonary Medicine
- General Surgery
- Orthopedics
- Neurology
- Neuro Surgery
- Nephrology
- Urology
- Dialysis
- ENT
- Pediatrics
- Radiation Oncology
- Medical Oncology
- Laboratory
- Blood Bank
- Laundry
- CSSD

Hospital Architectural Design Approach:

Environmentally friendly hospital with emphasis on energy saving, natural light and outdoor view. Hospital building to be designed as a humane and civilized space which is not threatening, but comfortable and stress free for both doctors and patients.

Proper utilization of space designed, to keep In- Patient and Out-Patient separate. Emphasis to reduce patients and staff movement between frequently used spaces. To minimize check in and discharge time through appropriate planning. Movement of Inpatient to Diagnostic to be separated from Outpatient. Food supply for Inpatient to be separated from OP.

Easy patient movement in the hospital for faster recovery and easy way finding anywhere in the hospital with due importance to signage's. Controlled circulation of people and goods so that back end facility is not mixed with Main facility.

Trivandrum International Medical Center, Trivandrum, Kerala



This **550 Bedded Multi Specialty Hospital**, Trivandrum International Medical centre with **total built – up area of 7,99,706 square feet (Basement + Ground + Tenth Floor)** is proposed on a site of 8.5 acres of total land area of 10.80 acres (4,70,567 Sq.Ft.) at Mamam, Trivandrum.

This hospital specializing in Cardiology and Cardiovascular surgery, Neurology and Neurosurgery, Joint Replacements, Liver diseases, Minimal access surgeries, Mother & Child care, Pulmonology, Endocrinology, Gastro-intestinal diseases (GI diseases), Dermatology, ENT, Radiation therapy, Haematology, Medical Oncology, Critical Care medicine, Nephrology, Ophthalmology, Dental care, General medicine and General surgery, Geriatrics and Cosmetology.

This hospital will provide world class healthcare services in all core disciplines including hi tech operation theatres supported by critical care beds, Internationally accredited diagnostics and laboratory services, affordable to a wide range of income groups.

Along with the Hospital project, the site also includes aged care accommodation (The Geriatric Centre) a home away from home with daily care and access to hospital facilities with total built up area of 3,45,493 sq.ft. including 5 basements + Ground + twelve floors in the site area of 2.25 acres.



The Geriatric Centre accommodates **248 units with basic amenities at every floor. These units are based on the areas of 600 sq.ft, 750 sq.ft and 1200 sq.ft**. It's expected time of completion is April 2019.

This hospital is put up by the chairman and managing director Dr. Y. A. Naser, a world renowned heart surgeon and Mr. V.K Ashraf Director, a successful entrepreneur based in U.A.E and Mr. T.S Ashok, Director of well-known construction group, Artech.



Government Medical College, Kozhikode, Kerala

The proposed Institutes shall be a self sufficient campus with state-of-the-art multi specialty facilities. Government Medical College, Kozhikode is a premier medical college located in the city of Kozhikode in Kerala. The Campus is spread over an **extensive area of 270 Acres. The Medical College has 250 Undergraduate Admissions and 122 Post Graduate Admissions. The College also has Super specialty , diploma and para medical courses. The Bed strength of the existing Hospital is 3468.**



The proposed Master Plan is designed to have **7142 Beds .With the total built up area of 84,22,989. 73 sq.ft., the new block was designed to house Mother and Child Care centers, Screening OPDs and OPD Rooms, 100 Dialysis beds and an upgraded emergency Department.**

Features;

5690 Inpatient Beds

Provision of Paid Beds – 504 Beds - Single Deluxe rooms and Twin sharing Room

Emergency and Trauma Beds – 355 along with Disaster management ward.

High End Diagnostics – 3CT and 3MRI

Low End Diagnostics – X – Ray, Fluoroscopy , USGs , Mammography, BMD,TMT , Echo, ECG, EEG, EMG, PFT, Holter , Urodynamic Labs, PFT.

100 Operation Theatres and 948 ICU Beds

Out Patient Department

100 Dialysis Beds

Location of the new building is designed in the centre of the campus, which creates better centralized management of the entire campus. The Primary objective is to be **“trend setter” in health research and advancement of Medical Sciences in India. The program and activities of the institute will focus on the providing the highest quality patient care services, medical education in advancing medical research.**



Apollo Hospital, Colombo, Sri Lanka

SITE PLAN



Apollo Hospitals, Colombo, is **Apollo's first multi-speciality tertiary-care hospital outside India.** With the objective of bringing international quality healthcare to the people of Sri Lanka and this part of South-East Asia, the hospital provides over **50 medical specialities.**

Designed to accommodate **350 beds** within a total **built-up area of 310,000.00 sqft spread over 11 floors**, the hospital is equipped with the latest high-end **Radiology and Imaging facilities, 10 (ten) Operating Theaters, 10 (ten) Dialysis Units, 72 Intensive Care Beds, a modern ER & Trauma Unit, 15 (fifteen) Super-Deluxe Suites** and other in-patient facilities. A roof-top helipad has been provided to enable air ambulance service. The original architectural design of the hospital, as proposed by SMP Architects, San Francisco (now SmithGroup), was identical to that of Apollo Hospitals, Ahmedabad. However, as was the case in Ahmedabad, the building had to be re-designed by AHEL's in-house design team, based on Vaastu principles. Construction commenced at the site in December, 2000. The hospital was inaugurated in June, 2002.



Apollo Hospital, Dhaka, Bangladesh

SITE PLAN



On 30th March, 2005, the Prime Minister of Bangladesh declared open this **ultra-modern multi-speciality tertiary-care facility** to the people of Bangladesh. Promoted by STS Holdings Limited and managed by Apollo Hospitals Enterprise Limited, the project was aimed at arresting the high outflow of patients to other countries for specialized medical treatment. Designed to accommodate **333 beds** which is expandable to 500 beds, the total built-up area of the facility is about **400,000.00 sqft**. Constructed on a 4.0 acre plot of land, the architecture of the building reflects the high-tech medical facilities offered by the hospital. A **1.5 Tesla MRI, 64-slice CT-Scanner, Gamma Camera, Fluoroscope, Fibrescope endoscopy, Cath-Lab, 2(two) Cardiac OT's, 5(five) OT's assigned for General Surgery, Neuro-Surgery and**

Ortho-Surgery, well equipped Laboratories, a fledged Blood Bank, a state of the art Physiotherapy Department, 90 Intensive Care Beds, 24 – hour ER and Trauma Department, a modern Birthing centre, an exclusive Master Health Check OPD, a Platinum Lounge, a roof-top helipad to facilitate Emergency Air Ambulance service, and many other first-time medical facilities in Bangladesh. The Out-Patient system is planned based on successful American models.



The Hospital Information System has been designed to make this the first paper-less hospital system in Bangladesh. Based on schematic architectural designs drawn up by SmithGroup, San Francisco (USA), detailed architectural services, including all hospital engineering services, were provided by Archi Medes India Consultants Pvt. Ltd., New Delhi.



Jigme Dorji Wangchuk National Referral Hospital, Thimpu, Bhutan

SITE PLAN



RGOB norms require that all buildings reflect the vernacular architectural style of the region. Extensive design consultations were carried out with the Traditional Architect of RGOB to ensure that all necessary traditional **architectural features were incorporated into the design of the hospital.**

The project is being funded on grant provided by the Government of India. The Project was completed in December 2008.

JDWNR Hospital is the largest healthcare facility in the whole of Bhutan. It is the only national referral hospital in the country. However, the quality of medical facilities in the existing set-up is far below optimal standards of healthcare. The process to upgrade and modernize the hospital was initiated way back in the early 90's. As a first step, the government set up the Filter Clinic adjacent to the existing hospital building. In **1998, AHEL's design team was appointed by the Ministry of Health, Royal Government of Bhutan (RGOB), to develop a master plan proposal for the modernization and re-vitalization of the hospital complex.** Various development options were examined and presented to the RGOB. **The selected option addressed the need to retain the existing hospital building even as the new hospital building is being constructed.** The master plan also addressed the need to upgrade this facility into a national level teaching hospital.

Construction work at the site commenced February, 2005. When commissioned, the new **400-bed multi-speciality tertiary-care JDWNR Hospital** covering a total built-up area of 310,000.00 sqft will be the only hospital in Bhutan equipped with the most modern **MRI, Linear Accelerator, CT- Scanner, Gamma Camera, Fluoroscope** and other high-end diagnostic and treatment tools.





Regional Referral Hospital, Mongar, Bhutan

SITE PLAN



Encompassing a total land area of **44.00 acres**, RRH Mongar serves as the principal referral center for the entire eastern region of Bhutan. The **existing 100-bed hospital building** is no longer fit to serve as a healthcare facility of any standard. Taking cognizance of the urgent need for a modern healthcare facility in the region, the **RGOB floated an international design competition in 2000**, to identify and appoint a suitable design firm for the design of the new hospital building. After a rigorous selection process, **AHEL's design team was appointed as hospital design consultants for the project.**



Within a master plan framework covering the entire **44.00 acres**, the **1st phase of the project envisages the construction of the main hospital building** and the development of the area around the hospital covering about 10.00 acres. The new hospital building with a total built-up area of **180,000.00 sqft** is **designed to accommodate 150 in-patient beds**. The project was commissioned in April, 2008. The design of the hospital building **incorporates all the necessary and mandatory traditional architectural features as required by the Royal Government of Bhutan.**





Neuro-Trauma Unit for National Hospital, Colombo, Sri Lanka

SITE PLAN



This **300-bed super-speciality tertiary-care** facility has been conceived with special focus on **Neuro-Trauma, Neurology and Neuro-Surgery**. The unit was set up as an extension of the **Accident & Trauma Department of the National Hospital of Sri Lanka (NHSL)**. The project is funded through a US \$ 4.89 million loan provided to the Sri Lankan Government by the Saudi Fund for Development. This **175,000.00 sqft** building accommodates 6 (six) ultra-modern **Operation Theaters (3 for Neuro-Trauma & 3 for Neuro-Surgery)**, **33 (thirty-three) Neuro-Surgery ICU beds**, **33 (thirty-three) Neuro-Trauma ICU beds**, **43 (forty three) HDU beds**, **37 (thirty-seven) Spinal Ward beds**, **53 (fifty-three) Head Injury beds** and **46 (forty-six) Neuro-Surgery beds**. A roof-top helipad is provided to enable air-ambulance service.



AHEL's design team was appointed as hospital design consultants through a competitive international selection process. The project was completed by the end of 2008.





200 Bed Al-Kafeel Specialised Hospital , Holy Attaba Abbasiah, Karbala, Iraq

SITE PLAN



Al-Kafeel hospital at Karbala is a **200 Bed Multi-speciality hospital**, managed by the board from Holy Attaba Abbasiah, Karbala. This hospital is planned in an **area of 25,000sqm.** and spanning across **five floors.** This hospital is well equipped with the state of the art Diagnostic facility both high end and low end well connected to the OPD in the ground floor. The facility has an impressive entrance lobby leading to the central atrium which is well lit with natural light and gives the patient and attendant a pleasant experience.



The shape of the hospital has been evolved based on the site profile and as a design, we were successful segregating inpatient facility with treatment facility. Operation theatre complex has been planned in one wing in second and third floor with ICU and Daycare beds in the first floor. This enables the hospital management to segregate the public movement from controlled treatment areas.

The entire hospital shall be centrally air conditioned and equipped with other building services like fire detection and protection, nurse call system, PA system surveillance. Hospital is self sufficient with its own laundry, CSSD and kitchen and centralised medical system.



230 Bed Al-Kafeel Specialised Hospital , Holy Attaba Abbasiah, Babylon, Iraq

SITE PLAN



This is a **135 bed Multi Specialty Hospital** with focus on **Orthopedics, Emergency and Pain Clinic** among others. It is planned with state of art Diagnostics & Treatment facilities to enable a better treatment by the Hospital Staff to the Patients.

The Hospital building is designed in as TWO BLOCKS-

1. MAIN HOSPITAL BLOCK
2. SERVICE BLOCK.

THE MAIN HOSPITAL BLOCK has 3 floors and one Lower Ground with an **area of 23,969.09 Sqm** and total height of 19M. The main block has **Emergency Department, Diagnostic Department and the Out Patient Department, In-patient rooms, Operation theatres and Intensive Care Beds.**



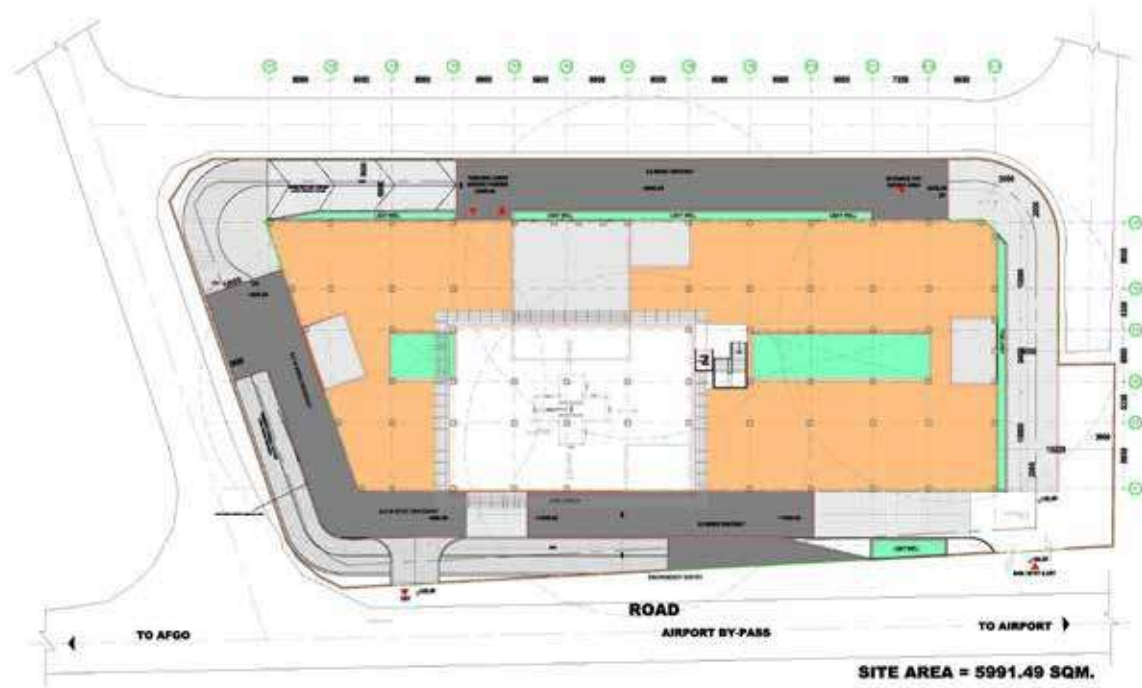
The Emergency Entrance is right in the front facing the Highway towards the east and well highlighted. The Main Entrance is from the North Side of the plot from the Branch Road. The Main Entrance of the Hospital is a very spacious LOBBY which leads into the lively Grand ATRIUM .





Airport City Hospital , Accra, Ghana

SITE PLAN



The Hospital would be equipped with **state-of – the-art diagnostic and clinical facilities** to provide best in class treatment. The building will comprise a modern and esthetically planned synthesis of functions and services.

The proposed Hospital would accommodate **120 Outpatient consultation rooms, 12 OTS and 112 ICU Beds and 220 In-patient Beds which caters to Single Deluxe, Twin Sharing, Suites and Presidential Suites.**

The Airport City Hospital at Accra is planned as the **first private Tertiary Hospital** in Ghana and fill a huge vacuum in the healthcare market in the country and the sub-region, the market for the high quality, international standard medical services which do not exist in Ghana and the West African sub region.

The Hospital would have **400 beds and spread over a Total Built up Area of approximately 5,70,000 Sq. Ft.** It will also offer optimum relationship between and within the departments for economy of physical stress to the patients and hospital staff. The simple internal circulation with various functional zones meeting around central core.

The entire hospital shall be centrally air conditioned and equipped with other building services like fire detection and protection, nurse call system, PA system surveillance. Hospital is self-sufficient with its own laundry, CSSD and kitchen and centralized medical system.



District General Hospital , Matara, Sri Lanka

This 800 Bedded Multispecialty Hospital with total built up area of 5,13,824.45 sq.ft. for hospital Building (Ground + tenth Floor) along with service Building with an area of 34137.49(Ground + Third) is proposed on a site of 1.02 Acres (44313.90 Sq.ft.) in the Southern province of the Sri Lanka.

This hospital will be specialized in Cardiology, Pediatric Surgery, Genito Urinary, Neuro Surgery, Ophthalmology, ENT, OMF, General Surgery, Critical care Medicine.

FEATURES

It will have centralized CSSD, laundry and Administration areas with IP pharmacy store with state of an art facilities.

Emergency Department, High end and Low End Diagnostics facility and other related facility are located on the Ground Floor for ease of flow of patients. Eight state of an art operation theatres with **60 ICU beds are the critical areas provided. Two Cath Labs with 10 bedded CCU, pre and post Angio 6 beds and Radial Lounge 8 beds are proposed. In patient floor with 752 patients beds in various categories like** General Wards, Single Deluxe rooms. Service building is proposed with Central HVAC Plant, LT/HT Room, Laundry, Central Kitchen, Hospital Administration, Material management and other facilities.





Teaching Hospital , Peradeniya, Sri Lanka

Peradeniya Hospital was donated by the Japanese Government to the Ministry of Health, Sri Lanka in August 1980. Thereafter the Hospital was administered under the purview of the Ministry of Health, Sri Lanka. All services of the Hospital are provided free of charge, in keeping with free health policy of the Government of Sri Lanka.

The Teaching Hospital Peradeniya is one of the prime tertiary care hospitals in the country, located along the Kandy, Colombo high way adjacent to the Royal Botanical Gardens of Peradeniya.

The Proposed Hospital would have **1000 beds and spread over a total built up area of approximately 831652.39 sq.ft. The hospital will have 16 Operation theatres with 128 ICU beds, 2 Cath lab, 2 Endoscopy and 886 Inpatient Beds. 24 Hour ER and Trauma department with 4 Operation theatre and 60 Beds.**





Kethumathi Maternity Hospital, Sri Lanka

A **300 Bedded Maternity Hospital** is being proposed at Sri Lanka with a site area of 2.4 Acres (104544.92) sq.ft. and a total built up area of 395722.31. The site is located in Kalutara District, Western Province in Sri Lanka.

The proposed Hospital will have **6 Operating rooms, 48 Intensive Care Beds, 320 Inpatient beds, Simulation Lab along with two Lecture Hall and Auditorium with 300 seating capacity**. Total of nine elevators are proposed.





600 Bedded Cardiology Institute for National Hospital, Sri Lanka

The Hospital would be designed to have all advanced and modern Radiology, Imaging (CT scan and MRI), **6 Cath lab complex, 9 Operation theatres, 165 Intensive Care Beds and 465 Inpatient beds** as single occupancy, double occupancy and general wards of 45 beds each.

The Hospital would also have an auditorium of **150 capacity and two lecture halls of 50 capacity each.**

The National Hospital of Sri Lanka (NHSL) is the premier public hospital of Sri Lanka. Establishment of a modern fully equipped dedicated cardiology and Cardio Thoracic centre at the NHSL was a long felt need and is identified as a priority requirement of the Ministry of Health (MOH).

The Hospital would be constructed with **Lower Ground Floor, ground floor and 13 upper floors, with a total built up area of 6,99,601 sq.ft.**

Mechanical Parking is also proposed for **480 cars.**





1200 Bedded Surgical Block for National Hospital, Sri Lanka

The National Hospital of Sri Lanka is the Government Hospital in Colombo, Sri Lanka. Founded in 1864 as the general Hospital, it is the leading hospital in Sri Lanka and is controlled by the Central Government. The Proposed Hospital is to be 1200 bedded Multi Specialty Hospital which is the part of the Government Hospital.

The total Built up area of the proposed project is 8,01,265.71 sq.ft.

The Hospital building will be 18 storeys high helipad for air ambulance facility on top.

Designed to have the latest state of the art medical equipments and an internal and external ambience expressing efficiency, cleanliness, comfortable to sooth the strained nerves of the patients, relatives and the staff, this hospital will be the first of its kind in region to provide quality Healthcare at an affordable cost.

The Hospital would have **34 Operation theatres, 2 Endoscopy, 56 Intensive Care beds, 1200 Inpatient beds** which caters to the wards, Single Deluxe, Standard Rooms and Double sharing Rooms.





Paediatric Oncology Hospital, Najaf, Iraq

This 200 bedded Hospital with focus on pediatrics oncology with a total built up area of approximately 4,81,527 sq.ft would be planned with state of art Diagnostics and Treatment facilities to enable a better treatment by the Hospital staff to the patients.

The Proposed Hospital building would be designed in as TWO BLOCKS –

MAIN HOSPITAL BLOCK

SERVICE BLOCK

The Hospital would be equipped with state-of-the-art diagnostic and clinical facilities to provide best treatment. The building will comprise a modern and esthetically planned synthesis of functions and services.

The proposed hospital would accommodate **26 Out Patient Consultation rooms, 4 OTs, 24 ICU beds and 157 Inpatient beds** which caters to Single Deluxe, Suites and Presidential Suites.

The Hospital would be equipped with 1 PET CT, 1 Gamma Camera, 2 Linear Accelerators, 1 Brachy therapy, Proton Therapy and other high end diagnostics and treatment tools.

The Entire Hospital shall be centrally air conditioned and equipped with other building services like fire detection and protection, nurse call system, PA system surveillance. Hospital would be self sufficient with its own laundry, CSSD and kitchen and centralized medical system.





Zain Alabideen Medical Complex, Karbala, Iraq



The Proposed **Zain Alabideen Medical Complex, Karbala, Iraq**, will be a **750 bedded hospital** with state of art multi specialty facilities. The primary architectural program, will include **Hospital, Medical and Nursing colleges** with support facilities. It shall also have residential facilities to accommodate Nursing staffs and Doctors. **The Hospital is designed to have extensive Accident and Emergency department, all advances and modern radiology, Imaging, 3 Cath Lab complex, 24 Operation theatres, 110 Intensive Care Beds and 501 Inpatient beds as single occupancy, Double occupancy, suite and presidential suite.**

The Hospital would also have an auditorium of **800 and 300 Capacity and four lecture halls of 120 and 250 Capacity.**

The Medical Complex is spread over a total built up area of **1472977.84 sq. ft. in the site area of 10 Acres.**





ARCHIMEDES INDIA CONSULTANTS PVT. LTD.

H.O. : # 92, 3rd Floor, R.K.Lake Tower, Hebbal Ring Road, Hebbal, **Bengaluru - 560 024**. Phone: +91 80 2325 9449

B.O.: 412, Sangrilla Arcade, Opp. Shyamal Row Houses 3(A), 100 Ft. Road, Shyamal Cross, Satellite, **Ahmedabad - 380 015**. Phone: +91 79 4007 3194

R.O: First Floor, A-8 Shivalik, Malviya Nagar, New Delhi - 110 017 Ph: +91 11 4651 4555

www.archimedes.in, email: info@archimedes.in